

Challenges & Changes

**TUNNELLING
ACTIVITIES
IN
JAPAN
2008**

JAPAN TUNNELLING ASSOCIATION

CONTENTS

Index	-----	1
General Aspects of Tunneling in Japan	-----	29
List of Members	-----	30

PREFACE

I feel really privileged to be given this opportunity to address tunnel engineers throughout the world on the occasion of the publishing of the 2008 edition of *Tunnelling Activities in Japan*, Japan Tunnelling Association (JTA)'s biannual publication. Despite the fact that in recent years tunnel construction projects in Japan are on the downturn, our country remains an outstanding global leader in terms of tunnel construction volume, with more than 14 million m³ excavated annually. Increase in tunnel length and expansion of tunnel cross section are two specific features in mountain tunnels of recent tunnel projects in Japan. The advancement in tunneling technologies in recent years has made it possible to construct economically long tunnels and large section tunnels in the complex and wide-ranging ground conditions in Japan. As a result, it has become possible to choose the shortest routes and higher standards in railway and road projects. In construction of urban tunnels, on the other hand, there are many cases in which construction work is implemented in the proximity of existing structures in areas where there is a convergence of underground structures such as subways, utility lines, etc. In addition, urban tunnels must be constructed to meet strict demands for reducing the impact on the surrounding environment. These factors have fueled the progress in the development of design and construction methods and shield machines that can fulfill the specific requirements for construction of urban tunnels. Based on such recent specific examples, this booklet presents a selection of some typical examples representative of the numerous tunnel projects and technological developments in Japan. I will be pleased if these articles prove useful for tunnel engineers around the world.



Hiroshi KOMORI

President
Japan Tunnelling Association

小森博

INDEX

2 Development and Practical Application of the New Tunneling Technique (SENS)



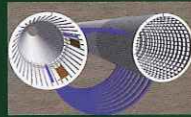
3 Development of the Rapid Construction Technique for Tunneling in Soft Rock Ground



4 Tunneling just under the Final Disposal Site of Industrial Wastes



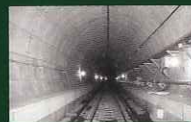
5 Non-open Cut Construction of a Pumping Room for Water Drainage of the Tunnel



6 Subway Tunnels with Quadruple Tube and Sharp Curve Sections



7 Countermeasures against Water Leaks in a Shield Tunnel Using Lightweight Panels



8 Widening and Reconstruction of a Road just beneath Six Commercial Railway Tracks



9 Construction by TBM of a Road Tunnel under the Shinkansen Tunnel



10 Central Circular Shinjuku Route



12 Road Tunnel Construction by Large Section Shield Tunneling in an Urban District



13 Construction of a Box-Shaped Road Tunnel beneath a Railway Viaduct



14 Excavating Soil and Rock by a Single Shield Machine



15 Design and Construction of a Tunnel Crossing Large Landslide



16 Construction of a Tunnel in Highly Pressurized Water Zone of Karst



17 Tunneling through Yubari Mountains



18 Construction by TBM of a Long Tunnel and New Ventilation System



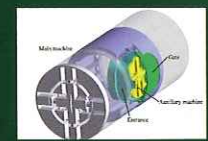
19 Excavation of an Ultra Large-section Tunnel in Weak Ground



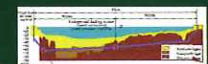
20 A Tunneling Project Near a Route in Service and Important Structures



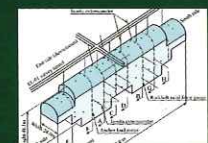
21 Different-diameter Mechanical Underground Docking and Right-angle Branching Shield Tunneling under High Groundwater Pressure



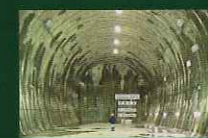
22 Mechanical Docking of the Long Shield Tunneling under Tokyo Bay



23 Information-oriented Construction for the Omarugawa Underground Power House



24 Test Cavern for Underground Disposal of Low-Level Radioactive Waste



25 Damage and Restoration of Railway Tunnels Hit by the Niigataken Chuetsu-oki Earthquake



26 Innovations in Technology